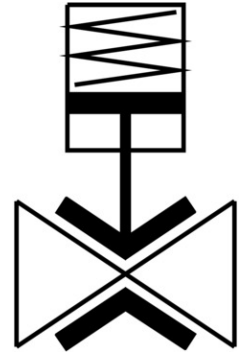


Pinch valve

VZQA-C-M22C-15-S5S5-ALV4E-6-E

Part number: 3412425

FESTO



Data sheet

Feature	Value
Type code	VZQA
Structural design	Pinch valve, pneumatically operated
Actuation type	Pneumatic
Sealing principle	Soft
Mounting position	Any
Type of mounting	Line installation
Fitting connection	Clamp as per DIN 32676 series A
Nominal width DN	15
Valve function	2/2, closed, monostable
Flow direction	Reversible
Medium pressure	0 MPa ... 0.6 MPa
Medium pressure	0 bar ... 6 bar
Medium pressure	0 psi ... 87 psi
Operating pressure	0.34 MPa ... 0.6 MPa
Operating pressure	3.5 bar ... 6 bar
Operating pressure	49.3 psi ... 87 psi
Nominal pressure of fitting PN	10
Burst pressure	1.6 MPa
Burst pressure	16 bar
Burst pressure	232 psi
Reset method	Mechanical spring
Type of control	Externally controlled
Auxiliary pilot air port 12	M5
Pilot medium	Compressed air as per ISO 8573-1:2010 [7:4:1]
Symbol	00992981
Medium	Compressed air as per ISO 8573-1:2010 [-::-1] Water
Max. viscosity	4000 mm ² /s
Temperature of medium	-5 °C ... 100 °C
Ambient temperature	-5 °C ... 60 °C
Storage temperature	6 °C ... 8 °C

Feature	Value
Flow rate Kv	5 m ³ /h
On switching time	150 ms
Switching time off	250 ms
Note on materials	Contains paint-wetting impairment substances RoHS-compliant
Housing material	Wrought aluminum alloy
Housing cover material	High-alloy stainless steel
Material no. housing cover	1.4435
Seals material	FPM
Shut-off element material	EPDM
Product weight	608 g
For use in the food industry	See supplementary material information
Material of bowl	PA6